



SPARE PARTS EXPLODED VIEW
ON FLOOR STANDING GAS BOILERS

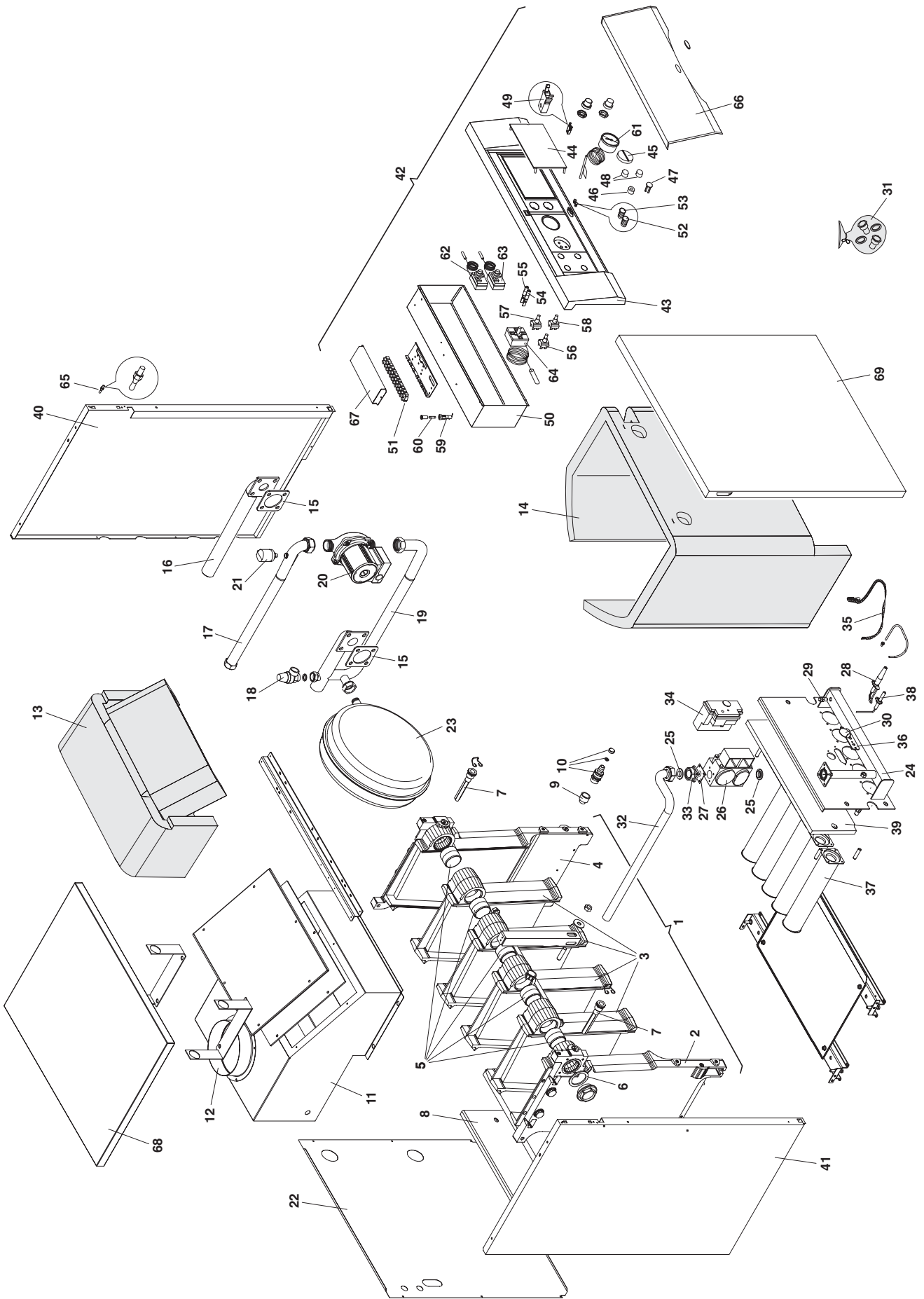
Models

UNOBLOC GPV 24 RI NG

UNOBLOC GPV 31 RI NG

Edition 1 of 31 January 2005





MODEL	CODE	SERIAL NO. VALIDITY	REF.
UNOBLOC GPV 24 RI NG	3300017	2320430500001	A
UNOBLOC GPV 31 RI NG	3300018	2320430500001	B

ER200521U000101001

PART.	CODE	DESCRIPTION	REF.	NOTE
1	65102601	Condenser	B	
1	65102605	Condenser	A	
2	65102602	Side element (L.H.)		
3	65102603	Intermediate element		
4	65102604	Side element (R.H.)		
5	997318	Biconic union		
6	997405	Gasket		
7	65102607	Probes holder plug		
8	65102606	Insulating panel	A	
8	65102608	Insulating panel	B	
9	65102609	Extension M-F		
10	997390	Drain cock		
11	65102610	Flue hood	A	
11	65102611	Flue hood	B	
12	65102614	Collar		
13	65102612	Flue hood insulation	B	
13	65102617	Flue hood insulation	A	
14	65102613	Boiler insulation	B	
14	65102619	Boiler insulation	A	
15	997407	Gasket		
16	65102615	Pipe (C.H. flow)		
17	65102616	Pipe (C.H. return)		
18	997377	Safety valve		
19	65102618	Pipe (C.H. return)		
20	997388	Pump		
21	65102620	Pressure switch		
22	65102621	Case panel (rear)	B	
22	65102624	Case panel (rear)	A	
23	65102622	Expansion vessel		
24	65102623	Gas manifold	B	
24	65102625	Gas manifold	A	
25	997410	Gasket		
26	997343	Gas electrovalve		
27	997411	Gasket		
28	65102626	Electrode (ignition)		
29	997347	Intake (pressure)		
30	997432	Pilot hole cover		
31	65102627	Natural gas burner jet full kit	A	
31	65102629	Natural gas burner jet full kit	B	
32	65102630	Gas inlet pipe		
33	997357	Gas flange		
34	997354	Printed circuit board (flame control)		
35	65102633	Shielding (ignition electrode)		
36	65102634	Electrode holder plate		
37	65102635	Pipe (burner)		
38	65102636	Electrode (Detection)		
39	65102628	Gas manifold insulation	A	
39	65102637	Gas manifold insulation	B	
40	65102638	Case panel (R.H. side)		
41	65102639	Case panel (L.H. side)		
42	65102640	Electric panel (complete)		
43	65102641	Control panel		
44	65102642	Cover (Thermostat regulation)		
45	65102643	Control knob		
46	65102644	Push button		
47	65102645	Plug		
48	65102646	Button		
49	65102647	Push-Push		
50	65102648	Control panel frame		
51	65102649	Complete wiring (electric panel)		
52	65102650	Signal lamp cap (green)		
53	65102682	Signal lamp cap (red)		
54	65102652	Signal lamp		
55	65102653	Signal lamp		
56	65102654	Switch		
57	65102655	Bipolar switch		

PART.	CODE	DESCRIPTION	REF.	NOTE
58	65102656	Switch		
59	65102657	Fuses holder		
60	65102658	Fuse		
61	65102659	Thermometer		
62	65102660	Thermostat (safety)		
63	997429	Thermostat (flue safety)		
64	65102662	Thermostat (regulation)		
65	65102663	Rods		
66	65102664	Electric box cover		
67	65102665	Service cover		
68	65102666	Case (cover)		
69	65102667	Panel (front case)		